

*Anita Goodesign's*

# *HOME DECOR*

*Coordinating Embroidery Designs for the Home*

## *Re-Sizing Program Tutorial*

*Please read before  
proceeding*

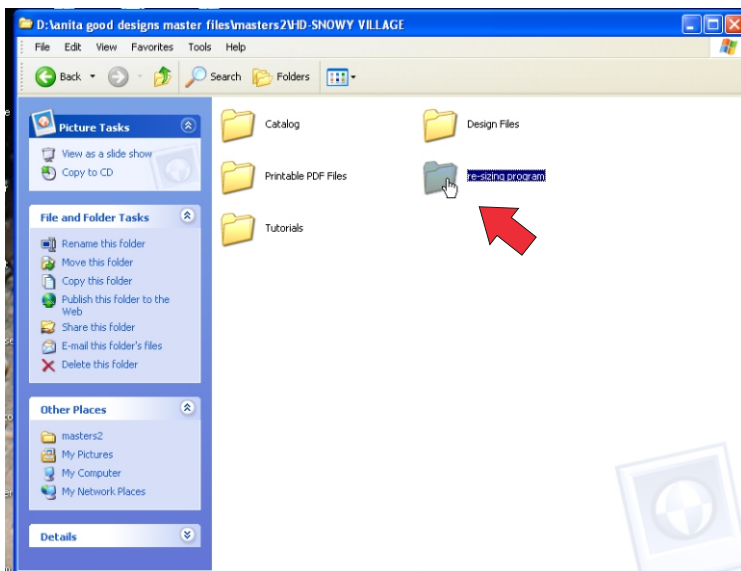
## Notes on Re-sizing Designs

We have included a very powerful re-sizing software that will allow you to change the size, colors or master density of any Anita Goodesign stock design file. This software will not allow you to re-size other designs because it requires a special file format.

Always *be careful when you resize a design*. Just because we now give you the ability to change a designs' size doesn't mean you can make it any size you want! Always test sew the re-sized design first before embroidering it on finished goods. We do not recommend re-sizing the design larger than twenty percent or smaller than 20 percent.

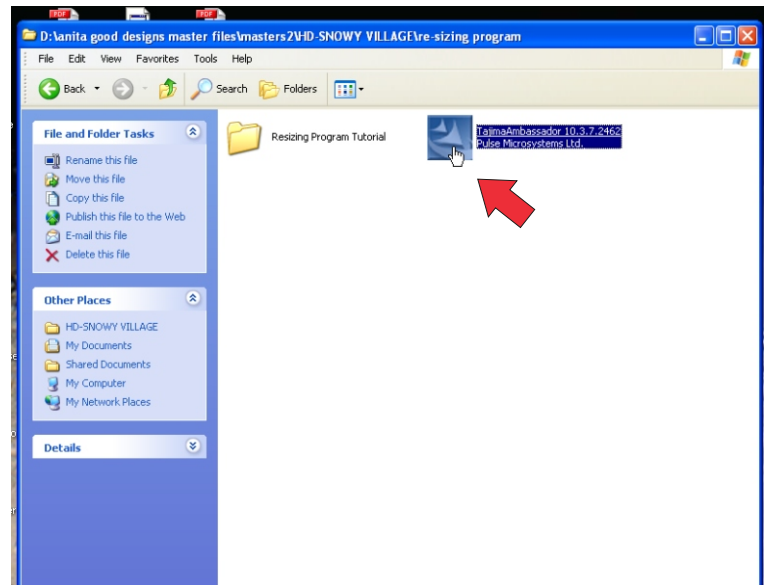
The re-sizing program will allow you to slightly adjust the designs' sizes to better accomodate your machines' hoop size. Follow the steps on the next few pages to learn the easy to use software.

### Program Location



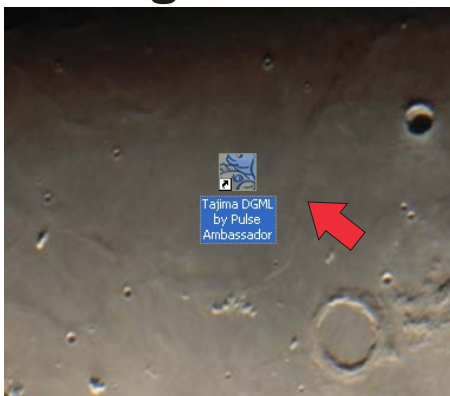
The program is called Tajima Ambassador and it is located on the CD-Rom under the folder titled "re-sizing program". Double click the folder and you will see two icons. One opens this tutorial and the other is the install program for Tajima Ambassador.

### Installing



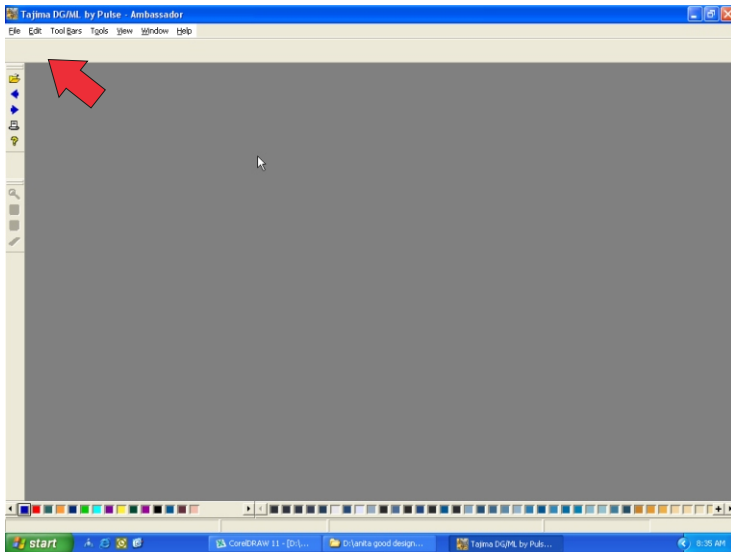
Double Click the Tajima Ambassador icon. This will start the installation of the program. Just follow the steps the same way you would for any windows program.

### Program Icon



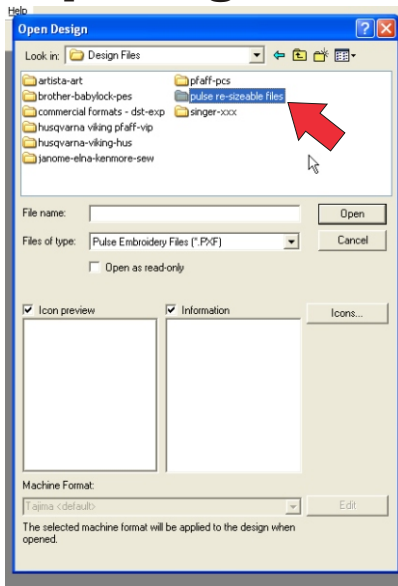
After the program installs you will see an icon on your desktop titled "Tajima DGML by Pulse Ambassador". Double click the icon to start the software.

## Tajima Ambassador

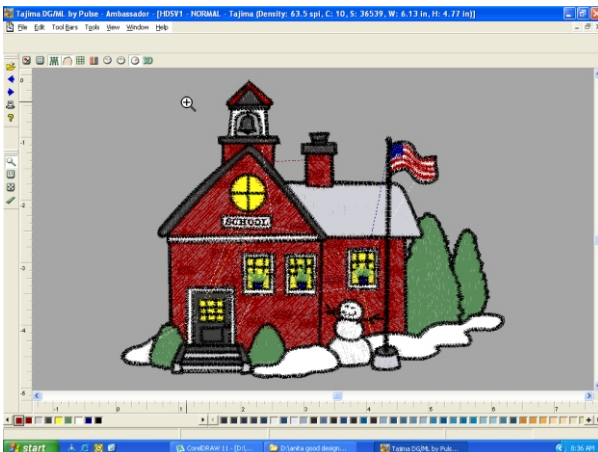


This is what the program will look like once you open it on your computer. Click on the 'File' pull-down menu in the upper left corner. When the menu appears you want to select "open file"

## Opening a file

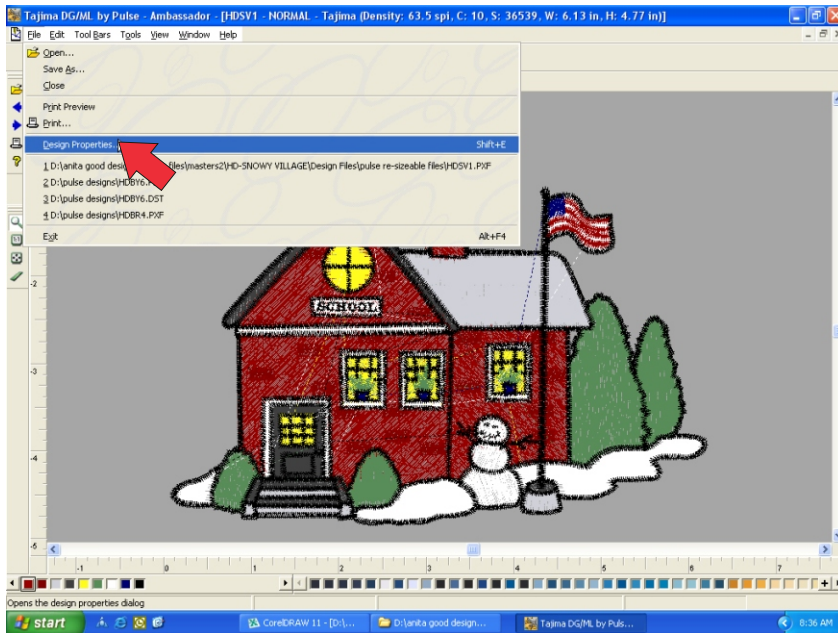


When you open the file you want to go to your CD-Rom drive folder. Then select the folder that says "Design Files". Once you open that you will see all of the folders appear with all of the different design formats available. You want to select the "Pulse Resizable Files" folder. This will show you all of the available re-sizeable designs. Choose one of the designs and select 'open'.

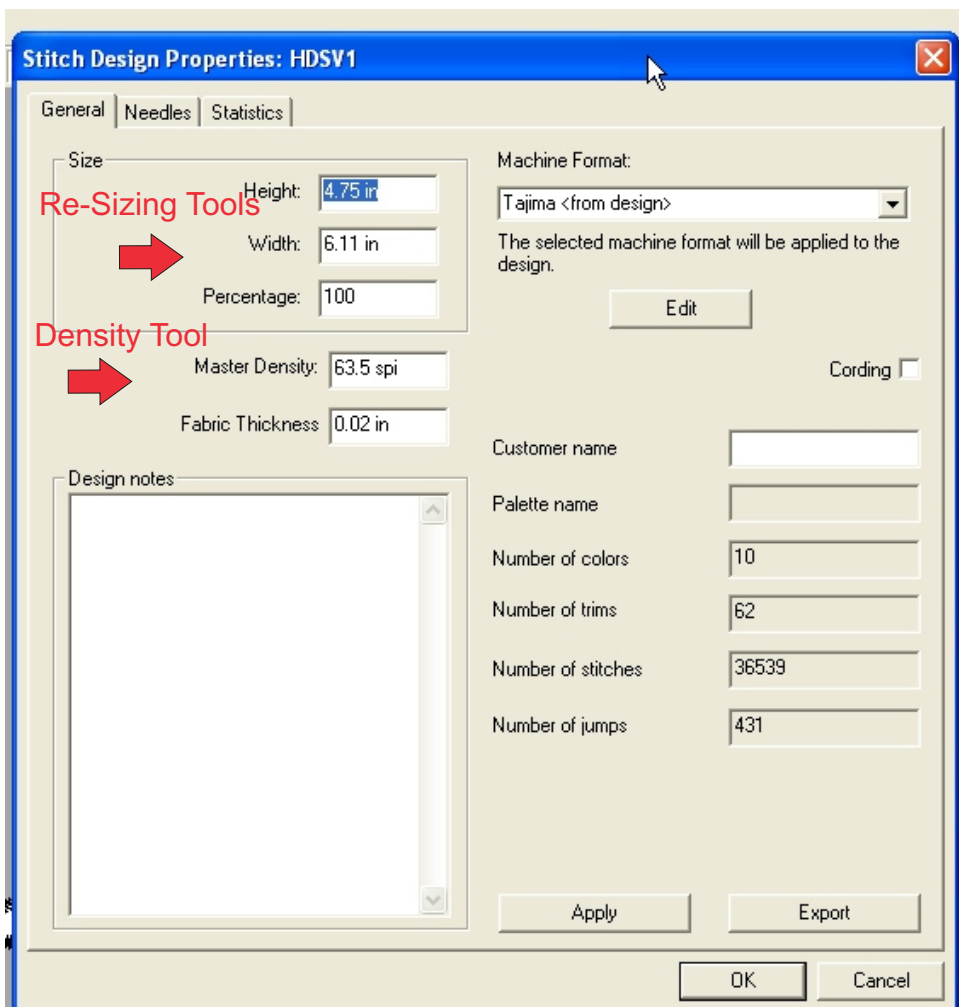


The design will then appear on your screen. Now we are ready to change the size.

## Re-Sizing a Design



Click on the 'File' menu in the upper left hand corner. Halfway down the pull-down menu you will see a command titled "Design Properties". Click on 'design properties' to open the dialog box.

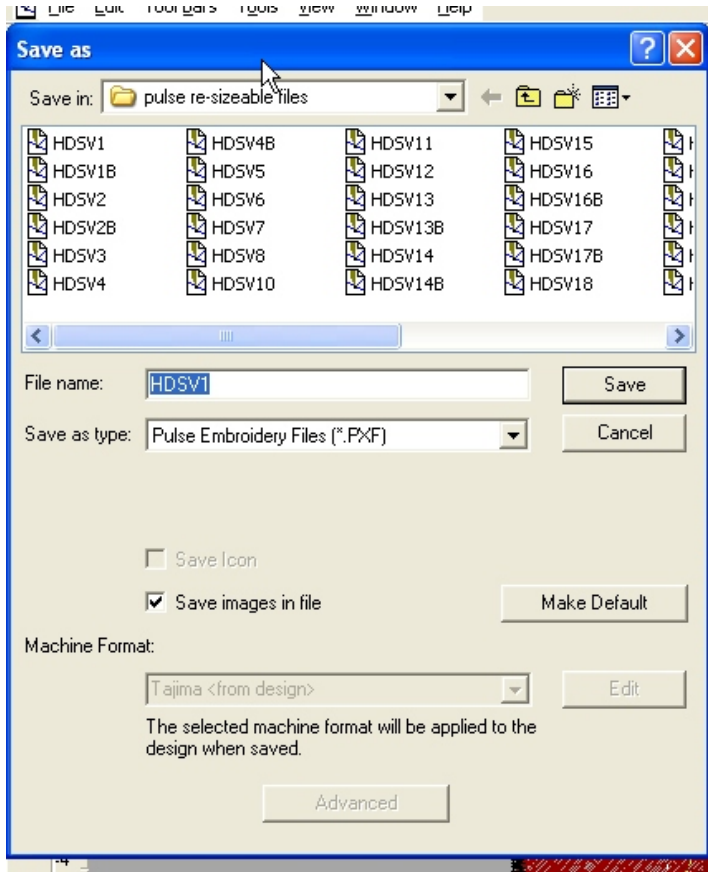


You can re-size the design a few different ways. The first way is by percentage. You can either make it larger or smaller by changing the re-size percentage. The second way is to re-size it using the height or width. You can only enter one; either the height or width. The software will then proportionally adjust the one you don't enter.

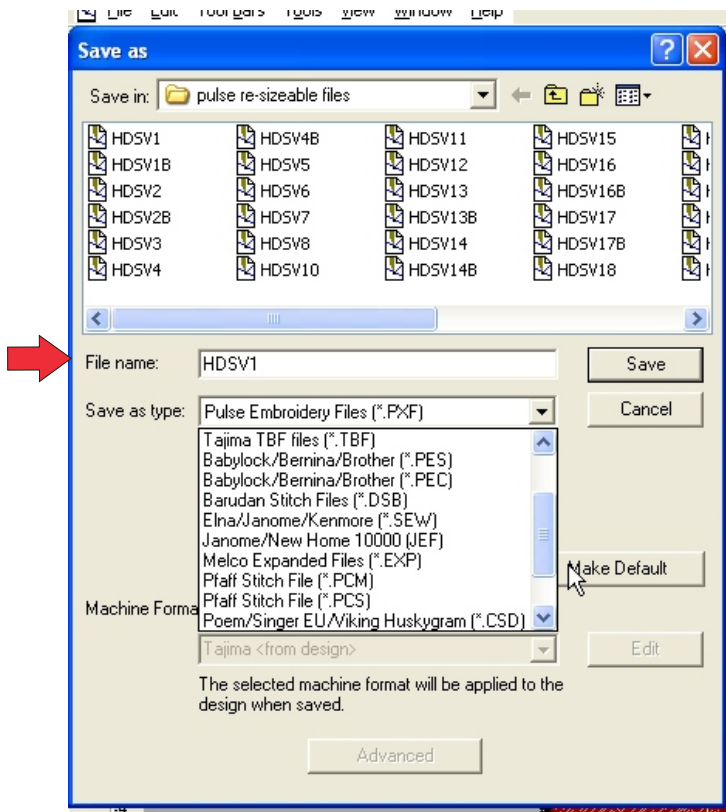
You can also change the master density. If you feel there are too many stitches in the design, lower the number. If you would like to add more stitches, increase the number. *Use this tool carefully* because it will effect the way the design sews.

After you have entered the numbers click the "Apply" button to make the changes.

## Re-Sizing a Design



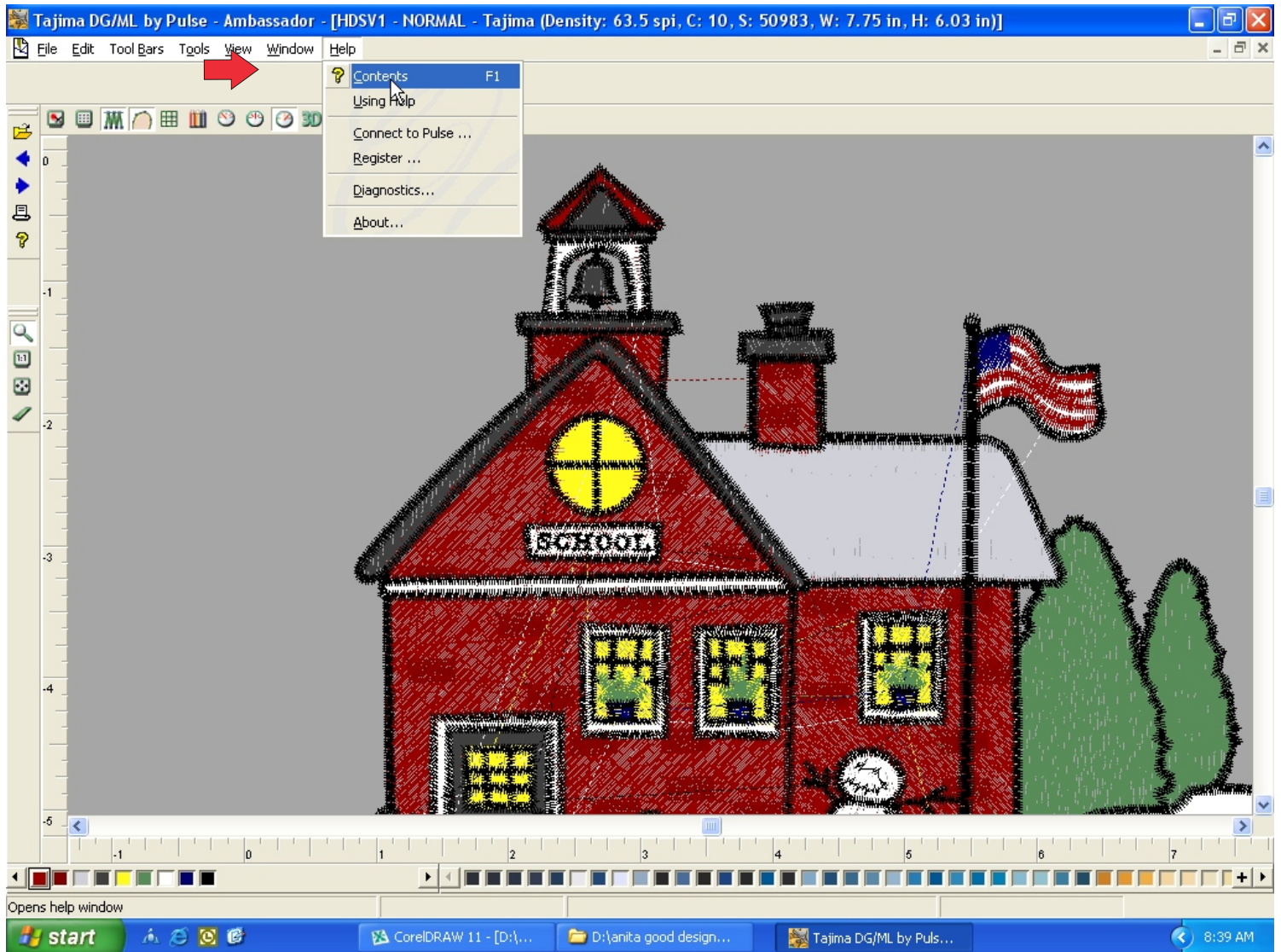
After you are done with your sizing edit you need to save the design. Go to the 'File' menu again and click "Save As". You never want to write over the original file! Where the file name is highlighted, type a different, new name and in the 'Save in' address window, choose a new location where you want to put the file. Now it is time to choose the format.



Before you click "save", make sure you choose the proper machine format. As illustrated to the right, you can choose many different home and commercial embroidery formats. When you re-size a design you may encounter problems with certain formats due to machine limitations. If you get an error message when saving; Save the design as a .dst file. DST files rarely carry errors or problems, however, they also don't carry the colors of the design. We suggest saving a design as a .dst file then bringing the design into your normal editing software and you can set the proper colors there. This may be the only way that some of you will be able to use this resizing program.



## Other Software features



If you would like to see what else the software can do or you have any questions, we suggest opening the 'help' file as illustrated above. The Pulse Ambassador software has a lot of other useful tools to make embroidery more fun. You can also print this tutorial out for future reference. Have fun with the re-sizing program and look for other Anita Goodesign stock design collections in the future.

If you have any questions regarding the software email Steve Wilson at [Swilson501@aol.com](mailto:Swilson501@aol.com)

P.S. We can't help you with embroidery problems that result in you re-sizing the designs. As we said earlier in the tutorial, re-sizing a design takes practice and may not always give you the same results as intended in the original design. If you are going to re-size a design however; this is the program that will give the best results for our designs.

Thank You,  
Steve Wilson